

# INDEURO

CERAMIC

GLAZED POLISHED  
PORCELAIN TILES  
**60X60CM**

Random Faces

---



POLISHED FLOOR

IDEALLY SUITABLE FOR  
FLOOR APPLICATION

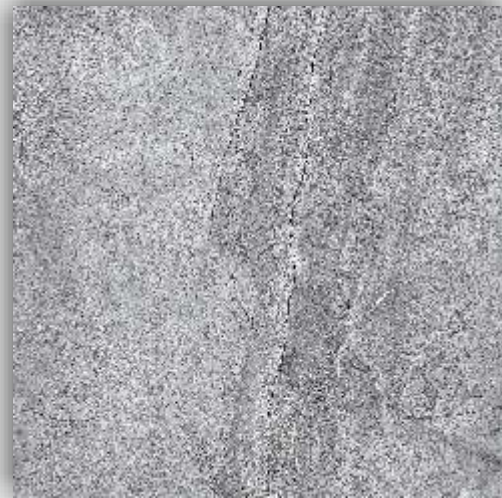
**IMAGICA GREY**

**GLAZED POLISHED PORCELAIN TILES**

**60X60CM**

Random Faces

---



IMAGICA GREY

GLAZED POLISHED  
PORCELAIN TILES

60X60CM



POLISHED



FLOOR

IDEALLY SUITABLE FOR  
FLOOR APPLICATION

r. No.	CHARACTERISTIC	STANDARD AS PER ISO -13006/EN14411 GROUP BILL	INDEURO Value	Test Method
<b>REGULATORY PROPERTIES</b>				
1	Deviation in length & width	± 0.5%	±0.3%	ISO-10545-2
2	Deviation in thickness	± 5.0%	± 4.0%	ISO-10545-2
3	Straightness in sides	± 0.5%	± 0.1%	ISO-10545-2
4	Rectangularity	± 0.5%	± 0.1%	ISO-10545-2
5	Surface flatness	± 0.5%	± 0.2%	ISO-10545-2
6	Color Difference	Unlterned	No change	ISO-10545-16
7	Glossiness	As per mfg.	Min 90%	GLOSSOMETER
<b>STRUCTURAL PROPERTIES</b>				
8	Water absorption	< 0.50%	< 0.05%	ISO-10545-3
9	Apparent density	> 2.0 g/cc	> 2.10 g/cc	DIN 51082
<b>MASSIVE MECHANICAL PROPERTIES</b>				
10	Modulus of repture	Min. 35 N/mm2	Min. 40 N/mm2	ISO-10545-4
11	Breaking strength	Min. 1300 N	Min. 2000 N	ISO-10545-4
12	Impact resistance	As per mfg.	Min. 0.55	ISO-10545-5
<b>SURFACE MECHANICAL PROPERTIES</b>				
13	Surface abrasion resistance	As per mfg.	Min. Class-3	ISO-10545-7
14	MOH's hardness	As per mfg.	Min. 6	EN 101
<b>THERMO HYGROMRTRIC PROPERTIES</b>				
15	Frost Resistance	No damage	No damage	ISO-10545-12
16	Thermal Shock Resistance	No damage	No damage	ISO-10545-9
17	Moisture Expansion	Nil	Nil	ISO-10545-10
18	Thermal Expansion(COE)	Max. 9.0 x 10 <sup>-6</sup>	Max. 6.5 x 10 <sup>-6</sup>	ISO-10545-8
18	Crazing Resistance	As per mfg.	Min. 10 Cycle	ISO-10545-11
<b>CHEMICAL PROPERTIES</b>				
19	Chemical Resistance	No damage	No damage	ISO-10545-13
20	Stain Resistance	Resistant	Resistant	ISO-10545-14
<b>SAFETY PROPERTIES</b>				
21	Slip Resistance	As per mfg.	> 0.40	ISO-10545-17
22	Fire Resistance	As per mfg.	Fireproof	N.A.

**IMAGICA GREY**

**GLAZED POLISHED  
PORCELAIN TILES**

**60X60CM**

